



First Nations and Inuit Health Branch Directive

UPDATED Self-Screening for COVID-19 of All Healthcare Professionals Prior to Assignment into First Nations Communities

Effective: 20/04/2020

Version 2

Sheet : 1 of 1

Amended Date: April 15, 2020

**Applies
To:**

- ☐ Governing Body
- ☐ Leadership & Operations
- ☒ Programs & Services
- ☐ Client, Family & Community

Approval Authority: Chief Medical Officer of Public Health, Indigenous Services Canada

1. PURPOSE:

In light of COVID-19 pandemic, ISC is continuously working with the regions and partners to ensure the safety and well-being of nurses, other healthcare professionals, and First Nations community members. Using methods such as self-screening of healthcare professionals prior to assignment into First Nations communities, is one way to prevent the introduction of the virus into communities, and to decrease the burden of illness resulting from the pandemic.

2. DIRECTIVE STATEMENT:

Until further notice, all healthcare professionals who are employed or contracted by FNIHB are required to self-screen for symptoms of COVID-19 virus prior to assignment into First Nations communities.

3. PROCEDURES:

All healthcare professionals who intend to travel into First Nations communities need to self-screen for exposure and symptoms of the COVID-19 virus no later than 12 hours prior to travel and until the time of departure, using the attached self-screening tool (Annex A). If they meet any of the exposure criteria or symptoms, then their travel must be delayed and they cannot report to work. They should follow their provincial/territorial public health guidelines.

4. SCOPE:

All healthcare professionals who are employed or contracted by FNIHB and working in First Nations communities are required to follow this Directive until further notice. Adjustments to this Directive may be made in the future to expand to other service areas, and will be communicated should this arise.

5. ACCOUNTABILITY:

Chief Medical Officer of Public Health, Indigenous Services Canada

6. REVISION:

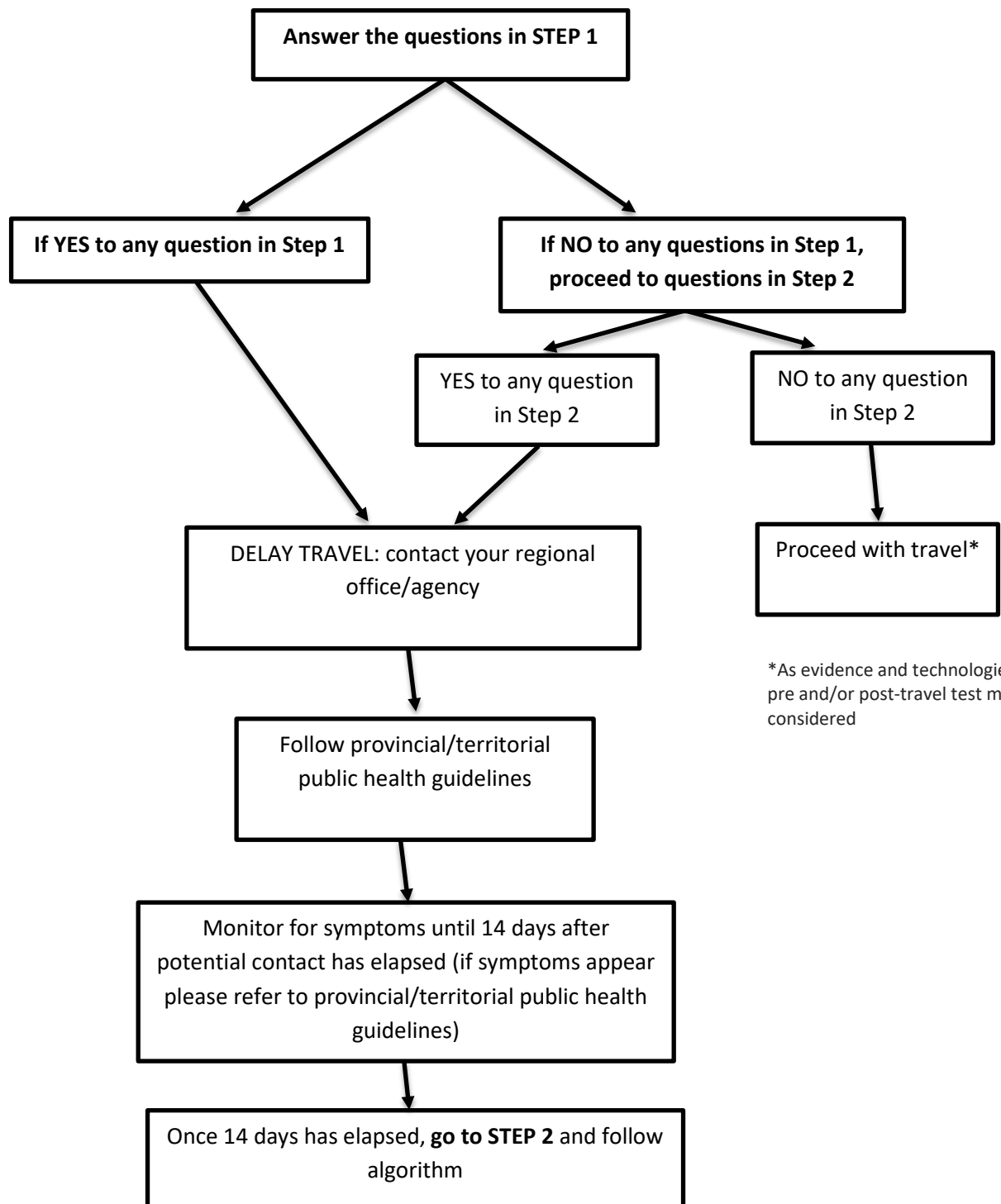
This Directive will be reviewed if recommendations from the Public Health Agency of Canada change substantively and/or they declare that the pandemic has ended.

Annex A: Self-screening Tool for Prior Assignment into First Nations Communities

ANNEX A

Self-screening tool for healthcare professionals, to be used before assignment into First Nations communities

- 1) Self-screening should occur at a maximum of 12 hours PRIOR to travel in the community, and should continue right up to time of departure;
- 2) Follow the algorithm below and to **STEP 1 and 2** on page 3



STEP 1: Contact/travel

Have you...?

YES	NO	Traveled to an affected area (including inside Canada) in the last 14 days
YES	NO	Had close contact* with a person with a respiratory illness who has been travelling to an affected area (including inside Canada) within 14 days prior to their illness onset
YES	NO	Participated in a mass gathering identified as a source of exposure (e.g. conference)
YES	NO	Had laboratory exposure to biological material (e.g. primary clinical specimens, virus culture isolates) known to contain COVID-19
YES	NO	Had close contact with a confirmed case of COVID-19 or lived in or worked in a closed facility known to be experiencing an outbreak of COVID-19 (e.g. long-term care facility)

STEP 2: Symptoms

Do you have any of the following symptoms?

YES	NO	Fever > 38°C or feeling feverish or have you had shakes or chills
YES	NO	Cough
YES	NO	Shortness of breath
YES	NO	Other symptoms such as fatigue, sore throat, headache, runny nose, muscle aches, decreased appetite, abdominal pain

*A close contact is defined as a person who provided care for the patient, including healthcare workers, family members or other caregivers, or who had other similar close physical contact or who lived with or otherwise had close prolonged contact with a probable or confirmed case while the case was ill

References:

For more information: www.canada.ca/coronavirus

PHAC case definition: <https://www.canada.ca/en/public-health/services/diseases/2019-novel-coronavirus-infection/health-professionals/national-case-definition.html#exposure>