



Discharge to Home

Planning Guide for First Nations Home Care Clients

Table of Contents

Background for Discharge Planning Guide

Purpose of Document	3
Intended Use	3
Overall Goal	3
The Landscape: Treaty Areas and Provincial System	4
Enlarged map of zone/treaty overlap in AB	5
The First Nation Home Care Client Pathway	6
Admission Aims.....	6
Navigation Flow Diagram	6
First Nations Home and Community Care Programs.....	7
Discharge Process Checklist	8
Glossary/terms	9
Appendix A	10
First Nation Community Contact List	10

Background for Discharge Planning Guide

Purpose of Document

To facilitate transition of First Nations clients between provincial sites to their home community when requiring home care. Improved transitions will ensure safe and effective coordination and continuity of care, and reduce readmissions by ensuring people have the support they need to stay well in their communities – on their terms. This guideline is not a one-size solution for everything; it is a starting point for teams to work together on client centred care-planning across transition points.

Intended Use

This document is a reference meant for health care providers and teams working in hospitals, primary care, and community settings in order to partner with First Nations clients, families, and caregivers.

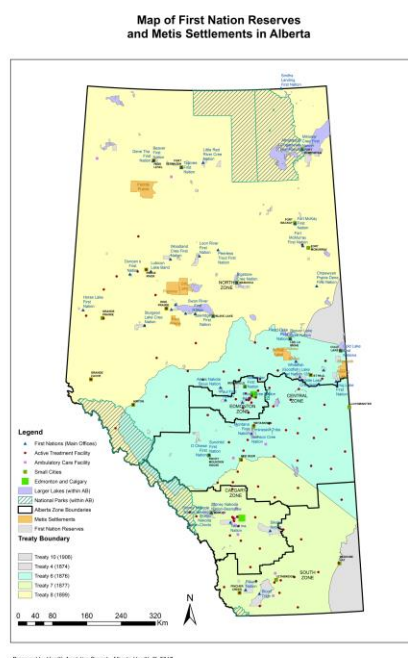
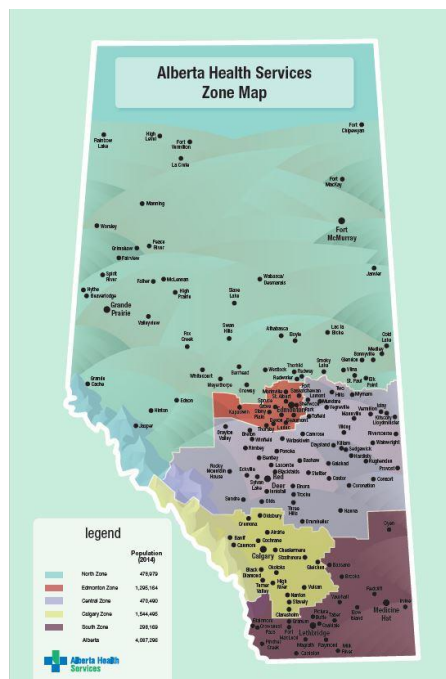
Overall Goal

Hospital discharge planning starts on admission and is the process of planning and organizing a safe discharge from hospital. The process entails arranging where the client will go, such as home or another facility, and organizing the type of care or support the client will need at the receiving end. Services including home care, nursing home care, rehabilitative care, outpatient medical treatment, and other assistance are arranged during the discharge process.

When home is the determined discharge destination and if the client requires care/support in the home, the community in which they live must be informed. The home care program in the community can prepare for receiving the discharged client. All parties receiving the discharged client will be notified within a timely manner including but not limited to the home care staff, family, or primary caregivers. The end of the process ensures a smooth transition from a provincial facility to home on reserve.

The Landscape

Treaty Areas and Provincial System



Alberta consists of five Alberta Health Services zones, which are:

- North
- Central
- South
- Calgary
- Edmonton

Alberta consists of three treaty areas, which are:

- Treaty 6: covers central Alberta and Saskatchewan consisting of 16 First Nation communities
- Treaty 7: covers southern Alberta and consists of 5 First Nation communities
- Treaty 8: covers northern Alberta and consists of 24 First Nation communities

The 2021 Census counted 1.8 million Indigenous people, now accounting for 5.0% of the total population in Canada¹. For the first time, the Census of Population enumerated more than 1 million First Nations people living in Canada (1,048,405). In Alberta, there are 45 First Nations in three treaty areas; 138 reserves, and approximately 812,771 hectares of reserve land²³. The most commonly spoken First Nations' languages are: Blackfoot, Cree, Chipewyan, Dene, Tsuut'ina/Sarcee, and Stoney (Nakoda Sioux).

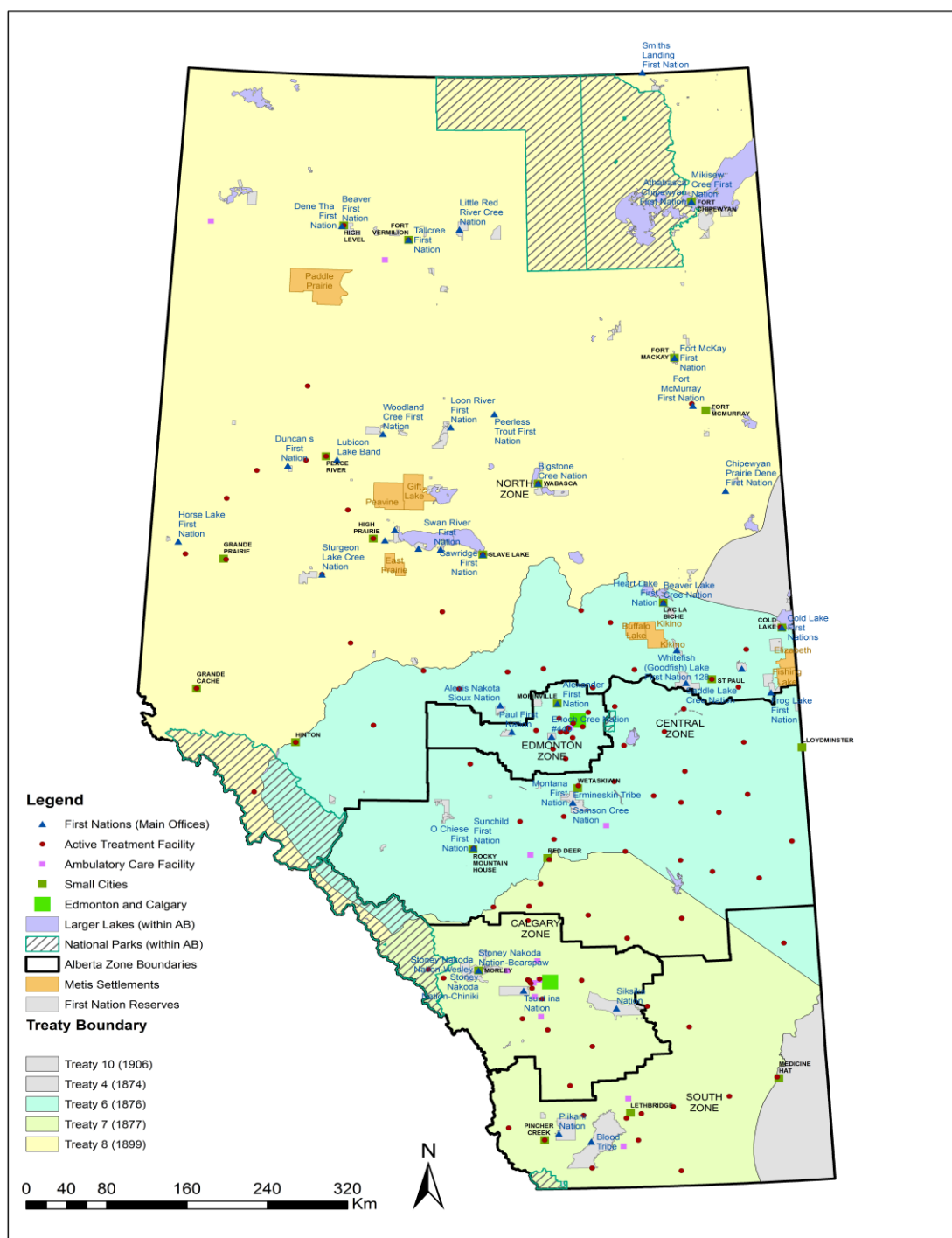
¹ Statistics Canada. (2021). Indigenous Peoples – 2021 Census promotional material. [Indigenous peoples – 2021 Census promotional material \(statcan.gc.ca\)](https://www150.statcan.gc.ca/n1/pub/98-146-x/2021001/article/00001-eng.htm)

² Aboriginal Affairs and Northern Development Canada. (2013). First Nations in Alberta. [First Nations in Alberta \(publications.gc.ca\)](https://www.aanncanada.ca/first-nations-in-alberta/)

³ Government of Alberta. (2021). First Nations reserves and Metis settlements. [First Nations reserves and Metis settlements - Open Government \(alberta.ca\)](https://www.alberta.ca/first-nations-reserves-and-metis-settlements.aspx)

Adapted from 2005 First Nations and Capital Health Region Discharge Planning Guide in conjunction with Alberta Home and Community Care Nurses Working Group (2025)

Map of First Nation Reserves and Metis Settlements in Alberta



Prepared by Health Analytics Branch, Alberta Health @ 2017

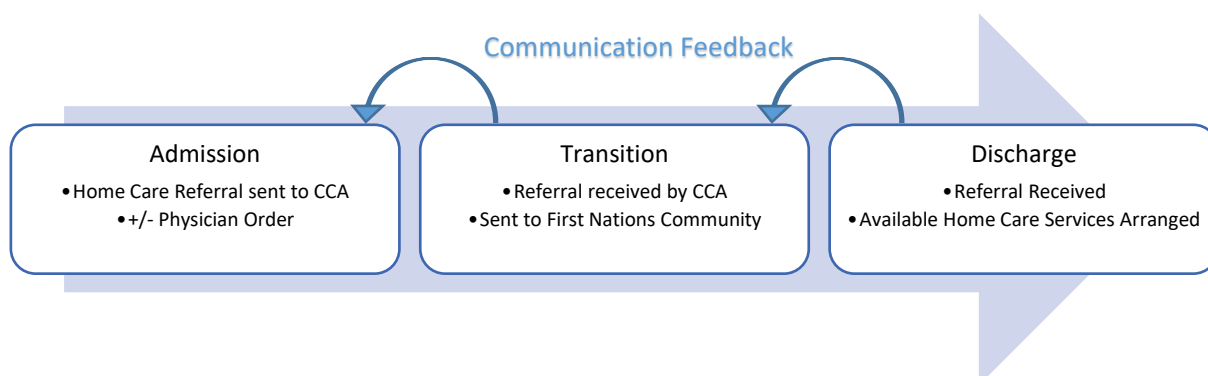
Adapted from 2005 First Nations and Capital Health Region Discharge Planning Guide in conjunction with Alberta Home and Community Care Nurses Working Group (2025)

First Nation Home Care Client Pathway

Admission Aims

1. Establish an AHS multidisciplinary team to support and reflect the client's needs and circumstances.
 - Members could include but are not limited to: physician, nurses, therapist, mental health practitioner, pharmacist, dietitian, specialist in client's condition, social worker, Indigenous liaison, and transition services.
 - The AHS-site multidisciplinary team must work as soon as possible with the community-based Home Care Program to provide coordinated support for clients requiring care at home through the discharge process.
2. The designated AHS-site discharge specific team member (social worker, Indigenous navigator/liaison, discharge coordinator, transition coordinator) will share assessments and updates on the client's health status with First Nation community teams.
3. The hospital-based physician will ensure the discharge summary is made available to the person's community physician and **health centre/nursing station** within the day of discharge or as soon as possible. Please give relevant documents and supplies to client upon discharge to assist in reducing barriers when client is home.

Client Navigation Flow



AHS-site discharging team to initiate coordination of transportation, medical equipment/supplies, pharmaceuticals, nursing and other health care services that are required. Continuing Care Access (CCA) will receive the referral from the AHS team electronically via Connect Care, fax, or another source. CCA uses the referral information to identify the home care services requested, location of services, safety concerns, and to fax the referral to the appropriate First Nation community home care office (FNHC). Please refer to [Appendix A](#) for First Nation community contact list and services provided.

First Nation Home and Community Care Programs

- Home care programs provide personal and health care services for community members of all ages.
- *Electronic Medical Records* – FNHC programs do not have access to Connect Care but may be able to access information captured in Netcare. First Nations peoples should be set up with MyAHS Connect prior to discharge.
- *Health Care Coverage* – First Nations people residing in the province have Alberta Health Care (personal health care number), which entitles them to services and benefits under the Alberta Health Care Insurance Plan. Those First Nations, who are **status**, are eligible for specified medical equipment/supplies and pharmaceuticals under the **Non-Insured Health Benefits (NIHB)** program in addition to Alberta Aids to Daily Living (AADL). [NIHB navigators](#) are available by Treaty area to provide support and reduce barriers in accessing the program.
 - Children under 24 months of age are able to access NIHB benefits using an eligible parent or guardian's status number.

- Funding through [Jordan's Principle](#) may be accessed for eligible First Nations children in order to respond to unmet health needs including products, services, and supports.
- *Safe Client Discharge* – The discharging site shall notify the FNHC office by phone a minimum of 48-72 hours prior to client discharge in order to arrange clinical services, medical supplies and equipment in community. Ensure copy of the home care referral form is forwarded as soon as possible to CCA in order to support a seamless transition.
- *Hours of Service* – Health centres generally function Monday-Friday 0830-1630. Communities are not funded for weekend, holidays, or evening homecare. First Nations clients discharged on Friday will not receive services over the weekend from the health centre. If this is required, the client will need to be kept in hospital until Monday or an alternative care arrangement can be met.
- *Facility Living* – Some communities have no access, or limited access to longer term services or specialized services such as continuing care homes (CCH), supportive living accommodations or group homes. Please liaise with health centre/nursing station to determine what services are available. If the client requires alternate level of care other than home care, AHS-site to arrange same.
- *Services in Community*– All communities do not have the same level of resources or services available, demanding an intimate understanding of community-based infrastructure including informal and formal systems of care. This highlights the need to ensure the acute care team has connected with the community early in the acute care stay (e.g., on admission). Refer to [Appendix A](#) for a list of services offered by each community.

Discharge Checklist

Action	Completed
<p>Discharge meeting(s): to include but not limited to the patient/family, AHS care team (Indigenous health services, transition/discharge coordinators, and unit staff) and community team (home care, nursing station, health centre).</p> <ul style="list-style-type: none"> Determine if discharge to home community feasible. Consult with community nurse as to clients unique needs and/or barriers (i.e. does the client have a home to go to?) Consider and adapt discharge plan as necessary for any functional deficits to clients home (i.e. adaptation of a ramp required, lack of running water, lack of electricity). Is the care the client requires available on reserve? If not, have arrangements been made for the client to receive care at an outpatient facility? Is the client already receiving home care services in community? 	
<p>Pharmaceuticals: medications ordered, approved, and dispensing pharmacy identified. Fax prescription to receiving health centre/nursing station and client's preferred vendor/pharmacy.</p> <ul style="list-style-type: none"> Provide a few days of medication in cases where it may take client time to fill prescription. 	
<p>Medical Supplies & Equipment: ordered, accessible, and available.</p>	
<p>Oxygen (If needed): process initiated at AHS-site as challenging to arrange when client on reserve.</p> <ul style="list-style-type: none"> <i>NIHB prior-approval</i> required for coverage - Complete form for oxygen therapy. 	
<p>Homecare referral: AHS discharge team sends referral to CCA as soon as possible.</p> <ul style="list-style-type: none"> AHS discharge team ensures appropriate lead time for First Nation health centre/nursing station to confirm capacity for home care services, supplies, and equipment. 	
<p>Client contact information: ensure accuracy in the chart to maintain communication and planning within transition points.</p> <ul style="list-style-type: none"> Confirm client telephone number, address, or alternate contact. 	
<p>Transportation: arranged by AHS-site and approved in coordination with First Nations medical transportation.</p> <ul style="list-style-type: none"> Contact First Nation community medical transportation department if during workhours by contacting health centre listed in Appendix A. Contact NIHB Medical Transportation if discharge after hours at 1-800-514-7106 to arrange transportation or night accommodation. 	
<p>Documentation communicated: ensure appropriate chart information sent to FNHC office.</p> <ul style="list-style-type: none"> Physician orders, consultation notes (i.e. renal, palliative), last 24 hour progress notes, reports (i.e. surgical, psychiatric), follow-up information, dressing/wound care protocol, referrals. 	
<p>Confirmation of receipt: AHS discharging team to follow-up with referring community to ensure all applicable information is received.</p>	

Glossary

Health Centre: Located in a First Nation community, generally provides public health/community and home care services to members. Primary care is delivered uniquely in each community and can be provided by visiting physicians, or nurse practitioners.

Jordan's Principle: Provides funding, products, services, and support to ensure all First Nations children living in Canada can access the products, services, and supports they need, when they need them. Jordan's principle information [here](#).

Jordan's Principle-eligible Client: A child under the age of majority in their province or territory of residence can access Jordan's Principle, if they permanently reside in Canada and if the child meets *one* of the following

- Is registered or eligible to be registered under the Indian Act
- Has one parent or guardian who is registered or eligible to be registered under the Indian Act
- Is recognized by their nation for the purposes of Jordan's Principle
- Is ordinarily a resident on reserve

Non-Insured Health Benefits (NIHB): The program provides eligible First Nations and Inuit clients with coverage for a range of health benefits that are not covered through other social programs, private insurance plans, or provincial/territorial health insurance. It provides coverage for: vision care, dental care, mental health counselling, medical supplies and equipment, prescription and over-the-counter medications, and medical transportation to access medically required health services not available on-reserve. NIHB Alberta contact information [here](#).

NIHB-eligible Client: The client must be a resident of Canada, and *one* of the following

- A First Nations person who is registered under the Indian act
- An Inuk recognized by an Inuit land claim organization
- A child less than 2 years old whose parent is an NIHB-eligible client

NIHB Prior-Approval: A program coverage confirmation issued by an NIHB regional office to a provider to ensure that the client is eligible for specific medical supplies and equipment benefits. The approval is used primarily for items identified as requiring authorization before being billed to the program.

Nursing Station: Located in a remote or semi-remote community, generally provides public/community health, home care, primary care and emergency 24h services to isolated First Nation members.

Treaty Status: Registered or Treaty Indian status refers to whether or not a person is a Registered or Treaty Indian. Registered Indians are persons who are registered under the Indian Act of Canada. Treaty Indians are persons who belong to a First Nation or band that signed a treaty with the Crown. Registered or Treaty Indians are sometimes called Status Indians.

First Nation Home Care Contact List

Community Name (Alternatives) ➤ Areas/Communities Associated	Health Centre/Nursing Station	Contact Telephone (T)/Fax (F)	Hours of Operation	Services Offered
Alexander First Nation	Alexander Health Services	T: (780) 939-4787 F: (780) 939-2951 Nursing F: (780) 939- 2718	M-F 0830-1630 *After hours homecare coordinator (587) 986-4787	Nursing, Homemaking Services, Occupational Therapy, Physiotherapy, Meal Programs, Mental Health Support, Psychologist, Palliative Care, Lab Services
Alexis Nakota Sioux Nation	Alexis Health Centre	T: (780) 967-1090 F: (780) 967-1109	M-F 0830-1630	Nursing, Personal Care, Occupational Therapy, Physiotherapy, Massage Therapist, Pharmacy, Medical Transportation, Nurse Practitioner, Mental Health Supports, Limited Palliative Care
Beaver Lake First Nation	Beaver Lake Health Centre	T: (780) 623-4276 F: (780) 623-4569 Nursing F: (780) 623- 4307	M-F 0830-1630	Nursing, Medical Transportation, Mental Health Support, Diabetes Program, Meal Program
Big Horn 144A ➤ Wesley First Nation	Big Horn Health Services	T: (403) 721-2262 F: (403) 721-3713	M-F 0900-1630	Nursing, Personal Care, Occupational Therapy, Physiotherapy, Psychologist, Mental Health Support, Medical Transportation, Adult Day Programs, Meal Program, Registered Dietician, Diabetes Clinic, Crisis Support, Lab Services, Physician Monthly, Nurse Practitioner Weekly
Bigstone Cree Nation ➤ Calling Lake ➤ Chipewyan Lake ➤ Wabasca/Desmarais	Bigstone Health Commission	T: (780) 891-2000 F: (780) 891-2623 Homecare F: (780) 891- 4822	M-F 0830-1630	Medical Transportation, Nursing Services, Personal Care, Homemaking Services, Mental Health Support, Palliative Care, Diabetes Clinic, Social Worker
Blood Tribe (Kainai)	Blood Tribe Department of Health Inc.	T: (403) 737-3888 Homecare T: (403) 737- 2040	M-F 0830-1630	Nursing, Personal Care, Occupational Therapy, Physiotherapy, Social Worker, Mental Health Support, Registered Dietician, Diabetes Clinic, Lab Services,

		Homecare F: (403) 737-3016		Xray Services, Primary Care Physician/Nurse Practitioner, Pharmacy, Palliative Care, Placement Options
Cold Lake First Nation	Cold Lake First Nation Heath Centre	T: (780) 594-2473 F: (780) 594-0084 Confidential F: (587) 840-6336	M-TR 0830-1630 F 0830-1400	Nursing, Personal Care, Medical Transportation, Meal Program, Mental Health Supports/Wellness, Limited Palliative Support, Nurse Practitioner
Driftpile First Nation	Maggie Willer Wellness Centre	T: (780) 355-3931 F: (780) 355-2055	M-F 0830-1630	Nursing, Personal Care, Homemaking Services, Medical Transportation, Meal Programs, Diabetes Clinic, Weekly Primary Care Physician
Duncan's First Nation	Duncan's First Nation Health Centre	(T): (780) 597-3730 (F): (780) 597-3717	M-F 0900-1600	Nursing, Medical Transportation, Homemaking Services, Meal Program, Limited Social Services
Eden Valley ○ Bears paw First Nation	Stoney Trail Wellness Centre	T: (403) 558-3656 F: (403) 558-2145	M-F 0830-1630	Nursing, Occupational Therapy, Physiotherapy, Primary Care Physician/Nurse Practitioner, Crisis Support, Medical Transportation, Registered Dietician, Mental Health Supports, Social Worker, Psychologist, Palliative, Weekly Lab Services
Enoch Cree Nation	Enoch Health Services	T: (780) 470-5440 F: (780) 480-0683	M-F 0830-1630	Nursing, Personal Care, Occupational Therapy, Medical Transportation, Meal Program for Elders, Mental Health Support, Diabetes Clinic, Crisis Support
Fort McKay First Nation	Fort McKay Health Centre	T: (780) 828-2450 F: (780) 828-2405	M-TR 0830-1630 F 0830-1400	Nursing, Personal Care, Homemaking, Physiotherapy, Meal Program, Medical Transportation, Adult Day Programs, Palliative Care, Registered Dietician Monthly, Crisis Support, Limited Lab Services, Limited Primary Care Physicians
Frog Lake First Nation # 121 & #122	Morning Sky Health & Wellness Society	T: (780) 943-3777 F: 1 (855) 975-0627	M-F 0800-1600	Nursing, Personal Care, Medical Transportation, Palliative Care, Diabetes Clinic, Lab Services
Fort Chipewyan ○ Mikisew Cree Nation ○ Athabasca Chipewyan First Nation	Nunee Health	T: (780) 697-3650 F: (780) 697-3565	M-F 0830-1700 *After Hours Nurse-in-Charge	Nursing, Personal Care, Physiotherapy, Medical Transportation, Palliative Care, Crisis Support, Lab Services, Primary Care Physician/Nurse Practitioners

Fort McMurray #468 First Nation (Gregoire Lake)	Fort McMurray #468 First Nation Health Centre	T: (780) 334-2443 Nursing T: (587) 645-2533 F: (780) 334-2999	M-TR 0800-1700 F 0800-1200 *After hours (587) 645-2533	Nursing, Personal Care, Homemaking Services, Medical Transportation, Palliative Care, Crisis Support, Lab Services
Heart Lake First Nation	Lena Obichon Health Centre	T: (780) 623-7477 F: (780) 623-8155	M-F 0900-1630	Nursing, Medical Transportation
Horse Lake First Nation	Horse Lake Wellness Centre	T: (780) 356-3013 F: (780) 356-2229	M-F 0900-1630	Nursing, Limited Personal Care, Homemaking Services, Limited Rehabilitation Services, Medical Transportation, Limited Palliative Care, Social Worker, Registered Dietician
Janvier First Nation (Chipewyan Prairie)	Chipewyan Prairie Health Centre	T: (780) 559-2375 F: (780) 559-2050 T : (780) 791-6250 F : (780) 788-1367	M-TR 1030-1600 when nurse in community	Nursing Services, Personal Care, Limited Lab Services, Medical Transportation, Mental Health Therapist, Limited Palliative Care, Limited Lab Services, Physician 1x/month
Kapawe'no First Nation	Alice Halcrow Healing Centre	T: (780) 751-2284 F: (780) 751-2363	M-F 0900-1600	Nursing, Physiotherapy, Medical Transportation, Monthly Physician Consultation, Psychologist, Meal Programs
Kehewin Cree Nation	Kehewin Health Services	T: (780) 826-2913 F: (780) 826-1915 Nursing F: (780) 815-7019	M-F 0830-1630 T/TR evenings, Saturday for wound care	Nursing, Homemaker Services, Physiotherapy, Podiatry, Diabetes Educator, Pharmacist, Primary Care Physician, Registered Dietician, Psychologist, Crisis Support, Palliative Care, Meal Programs, Medical Transportation
Kee Tas Kee Now Tribal Council ➤ Woodland Cree First Nation/Cadotte Lake ➤ Lubicon Lake Band/Little Buffalo ➤ Peerless Trout First Nation	<i>Woodland Cree Health Centre</i>	T: (780) 629-8963 F: (780) 629-3879 Homecare contact: KTC-homecare@ktcadmin.ca	0900-1700 M-TR (RN/LPN), Every other Friday (HCA)	Nursing, Personal Care, Homemaking Services, Visiting Physician 2-3x/month, Virtual Diabetes Clinics, Palliative Care
	<i>Lubicon Lake Health Centre</i>	T: (780) 629-3760 F: (780) 629-3824 Homecare contact: KTC-homecare@ktcadmin.ca	0900-1700 MW & every other Friday (RN/LPN), M-TR & every	Nursing, Personal Care, Homemaking Services, Visiting Physician 2-3x/month, Virtual Diabetes Clinics, Palliative Care

			other Friday (HCA)	
	<i>Peerless Trout Health Centre</i>	T: (780) 869-2358 F: (780) 869-2351 Homecare contact: KTC-homecare@ktcadmin.ca	0900-1700 Twice/Week (RN/LPN) M-F (HCA)	Nursing, Personal Care, Homemaking Services, Visiting Physician 2-3x/month, Virtual Diabetes Clinics, Palliative Care
Loon River First Nation	Loon River Health Centre	T: (780) 649-3490 F: (780) 649-2214	M-TR 0830-1630 F 0830-1200	Nursing, Personal Care, Medical Transportation, Meal Program, Palliative Care, Diabetes Clinic, Primary Care Physician/Nurse Practitioner
Louis Bull First Nation	Kispatnahk Health and Wellness Centre	T: (780) 585-2026 F: (780) 585-4095	M-F 0830-1630	Nursing, Personal Care, Medical Transportation
Little Red River Cree Nation <ul style="list-style-type: none"> ○ Fox Lake ○ John D'Or Prairie ○ Garden River 	<i>John D'Or Prairie Health Centre</i>	T: (780) 759-3773 F: (780) 759-2679 Medical Transportation LRRCN 1-833-577-2668	M-F 0900-1700	Nursing, Limited Personal Care, Medical Transportation, Palliative Care, Lab Services, Nurse Practitioner, Pediatric OT/PT/SLP, Mental Health Support, Crisis Worker, Diabetes Clinic
	<i>Fox Lake Nursing Station</i>	T: (780) 659-3730 F: (780) 659-3960 Medical Transportation LRRCN 1-833-577-2668	M-F 0900-1700	Nursing, Limited Personal Care, Medical Transportation, Palliative Care, Lab Services, Nurse Practitioner, Pediatric OT/PT/SLP, Mental Health Support, Crisis Worker, Diabetes Clinic
	<i>Garden River Health Centre</i>	T: (780) 659-3636 F: (780) 659-2171 Medical Transportation LRRCN 1-833-577-2668	M-F 0900-1700	Nursing, Limited Personal Care, Medical Transportation, Palliative Care, Lab Services, Nurse Practitioner, Pediatric OT/PT/SLP, Mental Health Support, Crisis Worker, Diabetes Clinic
Maskwacis <ul style="list-style-type: none"> ○ Ermineskin Tribe ○ Samson Cree Nation 	Maskwacis Health Services	T: (780) 585-2020 F: (780) 585-3848	M-F 0830-1630	Nursing, Personal Care, Registered Dietician, Palliative Care, IV Therapy Clinic, Osteopath, Homemaking Services, Medical Transportation, Meal Programs, Mental Health Support, Crisis Intervention Team, Lab Services, Diabetes Clinic, Physicians
Montana First Nation	Montana First Nation Health Centre	T: (780) 585-3744 F: (780) 585-6883	M-F 0830-1630	Nursing, Personal Care, Physiotherapy

North Peace Tribal Council <ul style="list-style-type: none"> Beaver First Nation Tallcree First Nation Dene Tha' First Nation (Bushe River, Meander River, Chateh) 	Beaver First Nation Health Centre, Boyer River Nursing Station, Tallcree South Health Centre, Tallcree North Health Centre, Meander Health Centre, Hay Lake Assumption Nursing Station	T: (780) 926-3446 F: (780) 926-4075 Homecare T: (780) 926-1204 Homecare F: (780) 926-4821	M-F 0900-1700	Nursing, Personal Care, Homemaking Services
O'Chiese First Nation	O'Chiese Health Centre	T: (403) 989-3900 F: (403) 699-2998	M-F 0900-1630	Nursing, Personal Care, Social Worker, Dietician, Occupational Therapy, Physiotherapy, Mental Health Supports, Psychologists, Primary Care Physicians, Nurse Practitioner, Lab Services, Day Programs
Paul First Nation	Paul First Nation Health Services	T: (780) 892-2096 F: (780) 892-2796	M-F 0830-1630	Nursing
Peigan Nation (Piikani, Brocket Reserve)	Aakom-Kiyii Health Services	T: (403) 965-3809 F: (403) 965-3048	M-F 0830-1630	Nursing, Limited Personal Care, Homemaking Services, Limited Occupational Therapy, Medical Transportation, Meal Program, Palliative Care, Registered Dietician, Lab Services, Primary Care Physician
Saddle Lake First Nation	Saddle Lake Health Centre	T: (780) 726-2774 F: (780) 726-2776	M-F 0830-1630 *After hours (587) 357-3169	Nursing, Personal Care, Homemaking Services, Rehabilitation Services, Medical Transportation, Meal Program, Palliative Care, Social Worker, Registered Dietician, Diabetes Clinic, Crisis Support, Lab Services, Primary Care Physician/Nurse Practitioner
Siksika Nation	Siksika Health Services	T: (403) 734-5600 F: (403) 734-3916 Homecare T: (403) 734-5695 Confidential F: (403) 734-3900	M-F 0800-1630 weekends by appt only	Nursing, Personal Care, Medical Transportation, Palliative Care, Occupational Therapy, Meal Program, Mental Health Support, Social Worker, Crisis Support, Diabetes Program, Pharmacy Services, Physician
Stoney (Mîni'Thnî/Morley)	Stoney Health Services	T: (403) 881-3920 F: (403) 881-2174	M-F 0900-1630	Nursing, Personal Care, Homemaking, Palliative Care, Occupational Therapy,

• Chiniki First Nation				Physiotherapy, Adult Day Programs/Outreach Programs, Social Worker, First Nation Client Liaison, Medical Transportation, Mental Health Support, Registered Dietician, Crisis Support, Lab Services, Xray Services, Primary Care Physician/Nurse Practitioner, Specialists (Rheumatology, OBGYN, Pediatrician, Orthotist, Psychiatrist, Sports Medicine, Dermatologist), Pharmacy, Jordan's Principle Renfrew Services
Sturgeon Lake First Nation	Sturgeon Lake Health Centre	T: (780) 524-3717 F: (780) 524-2903 Homecare F: (780) 524-3192	M-F 0830-1630	Nursing, Personal Care, Homemaking Services, Medical Transportation, Meal Program, Palliative Care
Sucker Creek First Nation	Sucker Creek First Nation Health Services	T: (780) 523-4390 F: (780) 523-1919 Homecare Fax: (780) 523-5934	M-F 0830-1630	Nursing, Personal Care, Mental Health Supports, Homemaking Services, Medical Transportation, Psychologist, Limited Palliative Care, Diabetes Support, Crisis Support, Physician 1-2x/month, Nurse Practitioner 1x/month
Sunchild First Nation	Sunchild Health Centre	T: (403) 989-3962 F: (403) 989-2251	M-TR 0900-1600 F 0900-1200	Nursing, Occupational Therapy Weekly, Physiotherapy 2x/month, Medical Transportation, Mental Health Supports, Registered Dietician, Lab Services, Primary Care Physician/Nurse Practitioner
Swan River First Nation	Swan River Health Centre	T: (780) 775-3544 F: (780) 775-2002	M-F 0830-1630	Nursing, Personal Care, Homemaking Services, Meal Program, Medical Transportation, Occupational Therapy, Physiotherapy, Massage Therapy, Mental Health Supports, Psychologist
Tsuut'ina Nation	Tsuut'ina Health and Wellness Centre	T: (403) 251-7575 F: (403) 251-1627	M-F 0800-1600	Nursing, Medical Transportation, Palliative Care, Registered Dietician, Lab Services, Primary Care Physician, Rheumatoid Arthritis/Internal Medicine Specialist Monthly, On-site Pharmacy

Whitefish Lake First Nation #128 (Goodfish Lake)	Goodfish Lake Health Centre	T: (780) 636-3638 F: (780) 636-3457	M-F 0830-1630	Nursing, Personal Care, Occupational Therapy, Medical Transportation, Palliative Care, Diabetes Clinic, Crisis Support, Lab Services
Whitefish Lake First Nation #459 (Atikameg)	Atikameg Health Centre	T: (780) 767-3941 F: (780) 767-3900	M-F 0830-1630	Nursing, Personal Care, Homemaking Services, Psychologist, Jordan's Principle Occupational Therapy/Physiotherapy, Medical Transportation, Meal Program, Virtual Diabetes Clinic, Physician 1xWeek, Women's Health Nurse Practitioner 2xMonth

***This list is not exhaustive and may change. Please contact health centre/nursing station for most up to date information.**